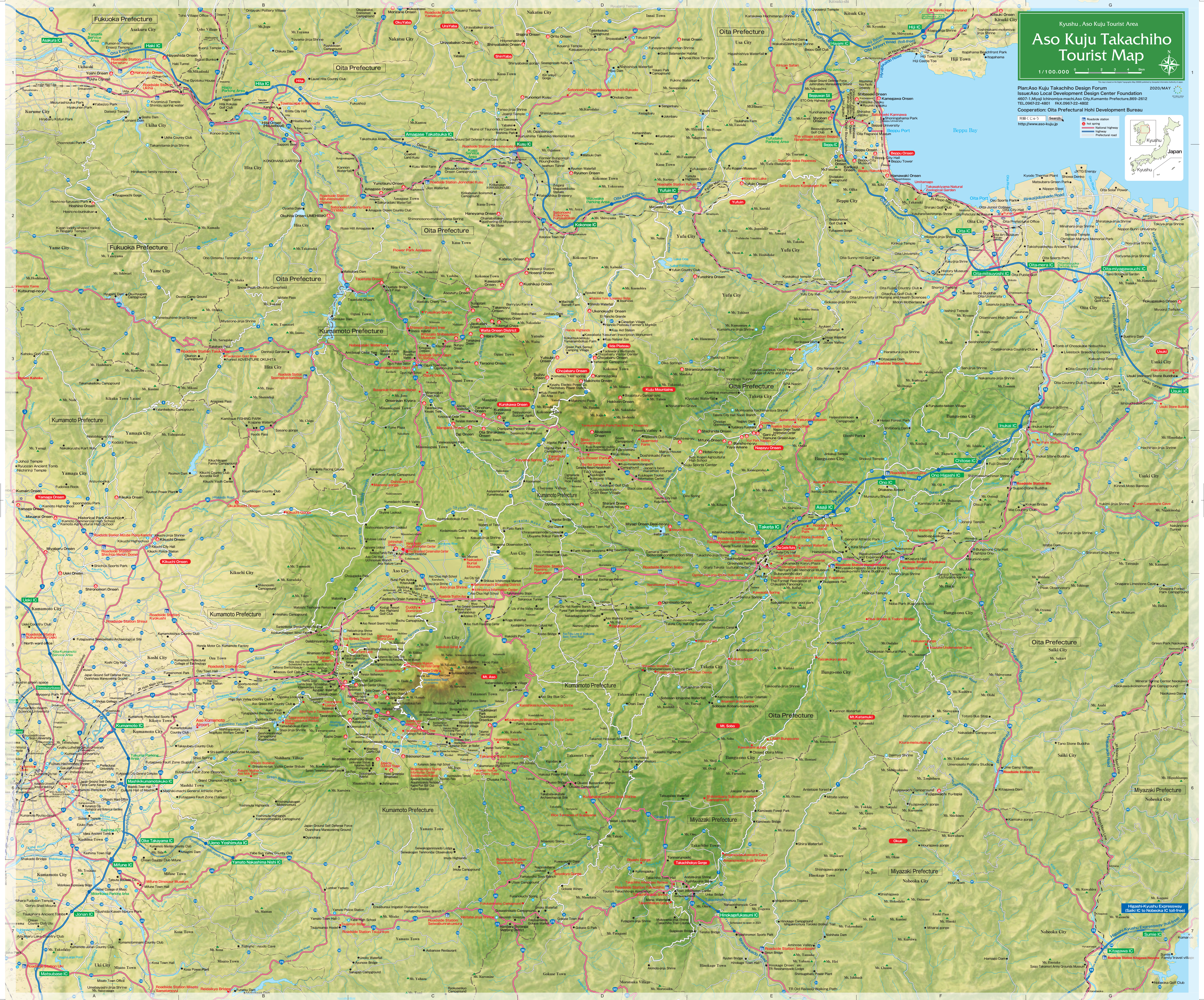


# Aso Kuju Takachiho Tourist Map

1/100,000

Plan:Aso Kuju Takachiho Design Forum  
Issue:Aso Local Development Design Center Foundation  
4607-1 Miyuki Ichinomiya-machi Aso City Kumamoto Prefecture,869-2612  
TEL:0967-22-4801 FAX:0967-22-4802  
Cooperation: Oita Prefectural Holi Development Bureau



# Come, see, and eat! Enjoy the grand vistas of Aso, Kuju and Takachiho, feeling the earth's vibrance.

Relax in the great expanse of prairie. Be amazed at the experience of running through the land of volcanoes. Mellow out in hot springs full of history and nostalgia. Sample the exquisite cuisine. The areas of Aso, Kuju, and Takachiho offer more attractions than you can enjoy in a day. Feel the spirit of the impressive land on an unhurried journey.



## Nature

**Aso area**

Mt. Aso (Aso Five Peaks/ Aso central volcanic cones) [C-3]

Nakadake crater [C-3]

Mt. Nakadake and Kusasenri-ga-hama [C-3]

Mt. Eboshi [C-3]

Mazeno Gorge [C-3]

Minami-Aso District Springs [C-3]

Ikeyama Spring [C-3]

Yamabuki Spring [C-3]

Wind Farm in Tawarayama [C-3]

Shiraito Waterfall [C-3]

Nabegataki Waterfall [C-3]

Soyokyo Gorge [C-3]

Ougitanada (Terraced Rice Fields) [C-3]

Rice Terraces of Sugayama [C-3]

Oshitoishi hill [C-3]

**Bungo-ono area**

Harajiri Waterfall [C-3]

Taizakokyo Gorge [C-3]

Chinda Waterfall [C-3]

Kawakami Gorge [C-3]

Mt. Sobo [C-3]

Koumori Waterfall [C-3]

Hakusan Gorge [C-3]

Yujaku Park [C-3]

**Taketa area**

Hakusui Dam [C-3]

Ameushi Waterfall [C-3]

Enkeibunsui Irrigation Diversion Device [C-3]

Shiramizu Waterfall [C-3]

Nanatsumori Ancient Tomb [C-3]

Kawauda Spring [C-3]

**Takachiho area**

Takachiho kyo Gorge [C-3]

Kuju Mountains [C-3]

## Experience Hot Spring

**Aso area**

Yusui Tunnel [C-3]

Trolley Train [C-3]

Rice Paddy Kayak [C-3]

Aso Milk Farm [C-3]

Moenosato Local Product Market [C-3]

Horse Riding (Kusasenri-ga-hama) [C-3]

Hot-air Ballooning [C-3]

Cycling [C-3]

Paraglider [C-3]

Kayak (Soyokyo Gorge) [C-3]

Isshingyo Cherry Tree [C-3]

Takamori Cedar Tree [C-3]

Senbonzakura (1000 cherry trees) [C-3]

Ruri Onsen [C-3]

Kurokawa Onsen [C-3]

Manganji Onsen [C-3]

**Bungo-ono area**

Uchinomaki Onsen [C-3]

Tsuetate Onsen [C-3]

Waita Onsen [C-3]

Shimojo Ginkgo Tree [C-3]

Fukukakematsu Campground [C-3]

**Bungo-ono area**

LAMP Bungo-ono [C-3]

Inazumi Underwater Cave [C-3]

Tento Sauna [C-3]

Amaterasu Railway [C-3]

Shikimbaru Campground [C-3]

**Takachiho area**

River Park Inukai [C-3]

Lodge Kiyokawa [C-3]

Takachiho kyo Gorge Boating [C-3]

**Taketa area**

Packraft [C-3]

Kuju Flower Park [C-3]

Boiboi Campground [C-3]

Tenkunotenbo Park (Tao Nature Theatre) [C-3]

Guernsey Farm [C-3]

Kokopelli Western Riding [C-3]

Nagayu Onsen (Kur Park Nagayu) [C-3]

Nagayu Onsen (Gozenyu) [C-3]

Taketa Onsen Hanamizuki [C-3]

## History Culture

**Aso area**

Aso-jinja Shrine [C-3]

Kitazato Shibasaburo Museum [C-3]

Kusakabe Yoshimi-jinja Shrine [C-3]

Taketa area

Oka Castle Ruins [C-3]

Taketa History and Culture Museum -Yugakkan [C-3]

**Bungo-ono area**

Fukoji Stone Buddha [C-3]

Deai Bridge & Todoroki Bridge [C-3]

Asakura Fumio Memorial Hall [C-3]

Anamori-jinja Shrine [C-3]

Christian Cave Chapel [C-3]

**Takachiho area**

Takachiho-jinja Shrine (Kagura) [C-3]

Amanoiwato-jinja Shrine [C-3]

Ondakeryu Kagura [C-3]

Ogimori Inari-jinja Shrine (Koto-sama) [C-3]

## Gourmet treats

**Aso area**

Akaushi Beef Dish [C-3]

Sake Brewery [C-3]

Dengaku (Miso glazed dish) [C-3]

Takana (pickled mustard leaf) [C-3]

**Bungo-ono area**

Toyo-no-shamo (gamecock) [C-3]

Sake Shochu (Visiting breweries in Bungo-ono) [C-3]

Buckwheat Noodles [C-3]

Game Meat Dish [C-3]

Kantakun (sweet potato) [C-3]

Oguni Jersey Milk [C-3]

Dried Shiitake Mushroom [C-3]

Clean Peach [C-3]

**Takachiho area**

Takachiho Beef [C-3]

Enoha (landlocked masu salmon) dish [C-3]

Tomato Dish [C-3]

Pione [C-3]

Guernsey Whippy Ice-cream [C-3]

Kojyonotuki-Mikasanano [C-3]

Wine [C-3]